







On this map, the main criteria for an area being classified as protected (red) are identified with an "A" or a "B". "A" refers to areas vulnerable to severe erosion and having slopes over 50%, "B" refers to documented sightings of threatened or endangered species, existing nesting sites of migratory birds, registered National Register of Historical Places and New Mexico State Register of Cultural Properties sites.

- Legend**
-  Ute Reservoir Roads
  -  Flowage Easement (3806')
  -  Prohibited Areas
  -  Protected Areas
  -  Limited Development Areas
  -  Public Recreation Areas

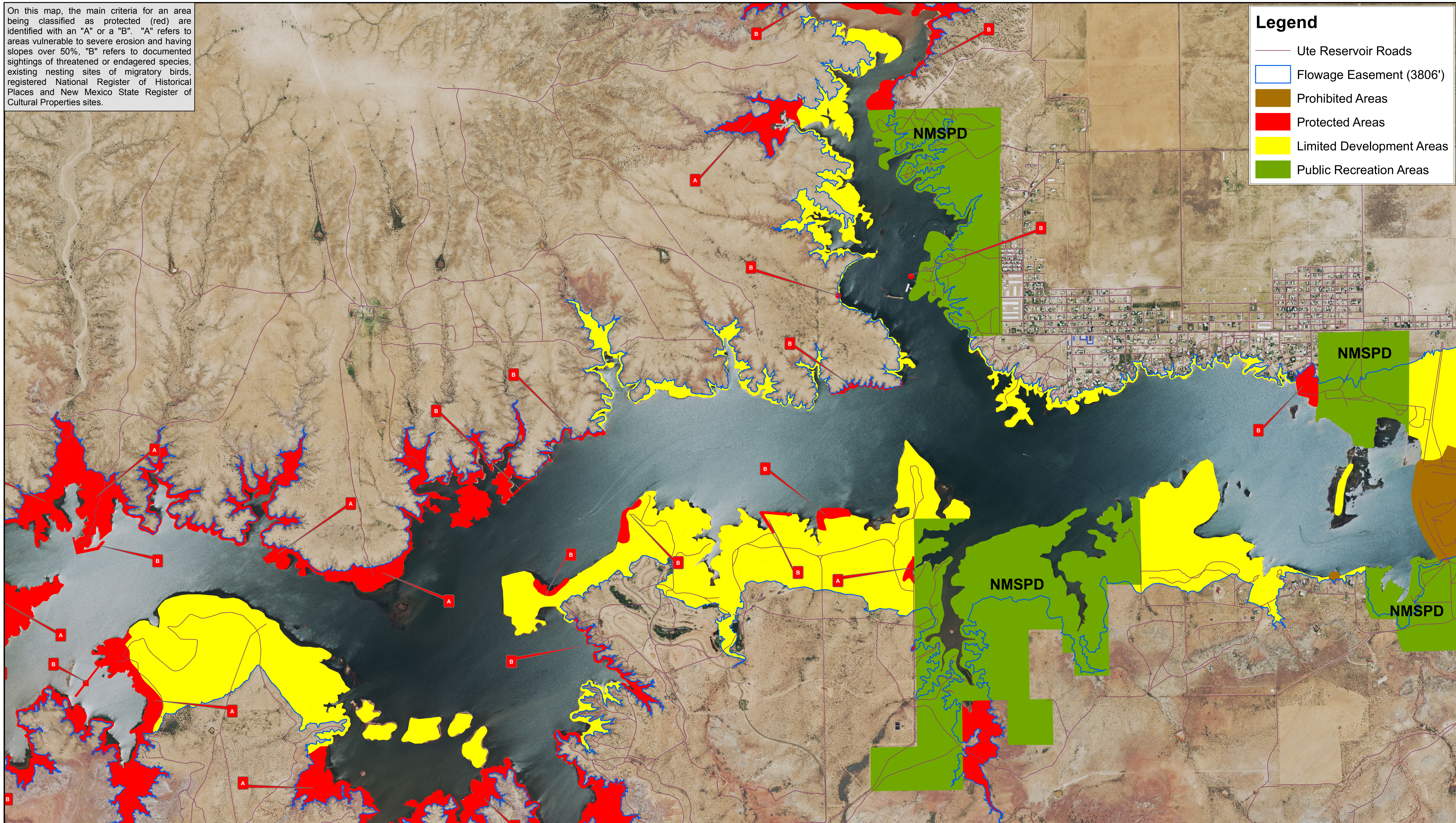
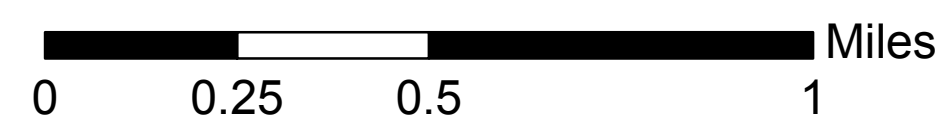


Exhibit F: Ute Reservoir Shoreline Classification Map



Revised April 13, 2016

